



Why Do I Need an Air Mover?

During the restoration process, it's tough to dry out the entire room, from sub flooring to ceiling. That's where air movers can help. An air mover, such as the Zeus 900 and Zeus Extreme, allows you to speed up the drying process by targeting airflow at a specific, difficult to dry location.

Why Do I Need an Air Scrubber?

Remediation jobs, such as sewage or fire, often mean contaminated air. This is where an air scrubber is useful. A scrubber, such as the CleanShield 550, removes debris, such as VOC's or mold spores, that may be circulating in the air. In addition to restoration jobs, an air scrubber is great for dust and odor control.

Warranty Information:

1 Year Warranty on Parts and Labor
(excluding transportation)

Need A Dehumidifier?

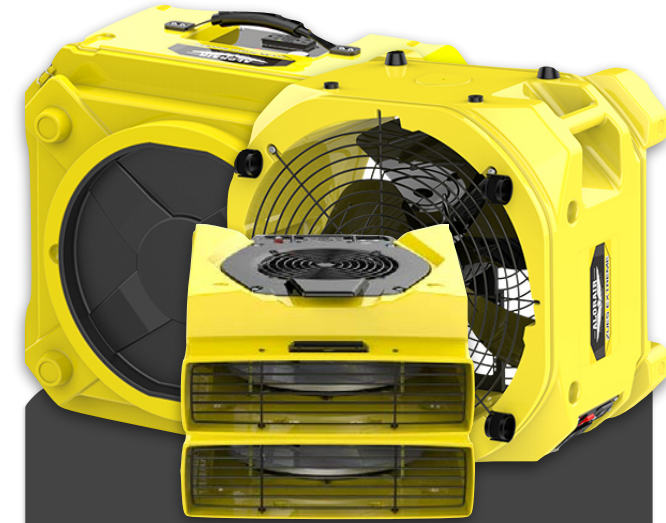


The Storm Series, by Seaira Global, is a complete lineup of flood and restoration dehumidifiers, ranging from 70 to 125 pints per day. For more information, visit : www.SeairaGlobal.com



* Exact specifications are subject to change without notice

Air Movers & Scrubbers



Seaira Global's line of air movers and air scrubbers can help you restore flooded and damaged areas as quickly and efficiently as possible.



www.SeairaGlobal.com



Zeus 900

- Multiple Operating Positions
- Link Up to Six Fans
- Extremely Efficient
- On Board Circuit Breaker
- Lightweight

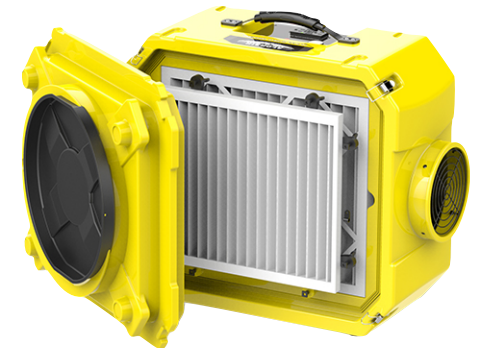
6 Blade Fan
On/Off Switch with Variable Speed
115 VAC
1.9 Amps (High Speed)
20' Power Cord
15A UL Rated GFCI Outlet
Approx. 950 CFM
<69 dBa
19.2 lbs
17.4"W x 9.85"H x 21.65"D



Zeus Extreme

- Automatic Hours Meter
- Link Up to Four Fans
- Ultra Powerful
- Stackable
- Multiple Operating Positions

1/4 hp, 1 ph, 2 speed, 4 Pole PSC Electric Motor
Variable Speed
115 VAC
2.5 Amps (High Speed)
20' Power Cord
15A UL Rated GFCI Outlet
Approx. 3000 CFM
<75 dBa
26 lbs
19.37"W x 20"H x 15.5"D



CleanShield 550

- Removes Particles Down to 0.3 Microns
- Advanced 3 Stage Filtration
- Ultra Powerful
- Stackable
- Link up to 3 Units on 1 Outlet

16" Intake Duct Size 8" Outlet Duct Size
Variable Speed
2.8" (H2O) Static Pressure
115 VAC
25' Power Cord
15A UL Rated GFCI Outlet
550 CFM (High Speed)
<69 dBa
39.6 lbs
25"W x 23.5"H x 16.5"D